

Pack content:

1 aluminium container with 100 test strips

Measuring range:

Visually
50–2000 mg/L or 0.3–11.1 mmol/L

Reflectometrically
50–2000 mg/L or 0.3–11.1 mmol/L

Color gradation:

0 – 50 – 100 – 250 – 500 – 1000 – 2000 mg/L or
0 – 0.3 – 0.55 – 1.4 – 2.8 – 5.55 – 11.1 mmol/L

Hazard warnings:

This test does not contain hazardous substances that must be labelled.

General indications:

Remove only as many test strips as are required. Close the container immediately after removing a strip. Do not touch the test field.

Instructions for use:

1. Dip test strip into test solution for 2 s.
2. Shake off excess liquid.
3. Wait 30 s.
4. Compare with the color scale. If Glucose is present, the test field turns green-blue.

The reaction color of the test field may change after the value has been taken. It is therefore crucial to evaluate the coloration within the prescribed time scale in order to achieve a correct result. Ignore color changes that occur after the reaction time (30 seconds).

Interferences:

If the sample solution has a pH value of 2-9, the reaction will take place without interferences. Strongly acidic solutions can be adjusted with sodium hydroxide solution, alkaline solutions with hydrogen chloride solution to a pH of 5-7. The following ions interfere with the determination when the concentrations below are exceeded (tested with 0 and 250 mg/L respectively of glucose solutions):

1000 mg/L: Ca²⁺, Cl⁻, HCO₃⁻, NO₃⁻, PO₄³⁻, acetate, citrate, ethanol, glycerol, lactate, malate, oxalate

250 mg/L: NO₂⁻

20 mg/L: SO₃²⁻, ascorbate

1 mg/L: H₂O₂

0,1 mg/L: peracetic acid

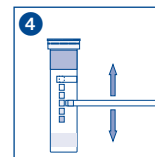
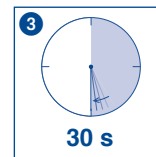
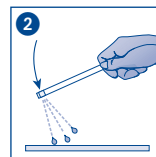
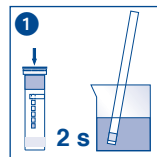
Disposal:

Used test strips can be placed in the normal household waste.

Storage:

Avoid exposing the strips to sunlight and moisture. Keep container cool and dry (storage temperature not above +30 °C).

If correctly stored, the test strips may be used until the use-by-date printed on the packaging.



REF	Artikelnummer / Item number / Référéncie produit / Referencia / Artikelnummer / Numero di catalogo / Numer artykułu	LOT	Chargencode / Batch identification / Numéro de lot / Código de lote / Productienummer / Codice del lotto / Numer partii
	Achtung! / Warning! / Attention! / ¡Atención! / Let op! / Attenzione! / Uwaga!		Verwendbar bis / Use by / À utiliser avant / Fecha de caducidad / Te gebruiken tot / Utilizzare entro (anno / mese) / Przydatność do użycia
	Temperaturbegrenzung / Permitted storage temperature range / Limites de température / Límites de temperatura / Temperaturbegrenzung / Limite de temperatura / Ograniczenie temperatury		Trocken aufbewahren / Store in a dry place / Conserver au sec / Mantener seco / Op een droge plaats bewaren / Mantenerse asciutto / Przechowywać w suchym miejscu
	Gebrauchsanweisung beachten / Please read instructions for use / Respecter les instructions d'utilisation / Obsérvense las instrucciones de uso / Lees de bijsluiting / Consultare le istru- zioni per l'uso / Przestrzegać instrukcję użycia		Packung geschlossen halten / Keep container closed / Refermer la boîte / Mantenga el envase cerrado / Verpak- king gesloten houden / Conservare la confezione chiusa / Przechowywać pojemnik szczelnie zamknięty
	Ausreichend für <n> Prüfungen / Contains sufficient for <n> tests / Contenu suffisant pour <n> tests / Contenido suficiente para <n> tests / Voldoende voor <n> tests / Contenido sufficiente per <n> test / Wystarczająco dla kontroli <n>		